

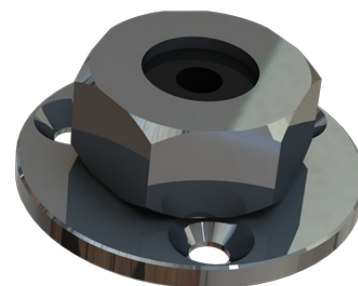
Datasheet

1 / 2

CABLE FEED THROUGH (Ø 5 - 6 MM)

Cable Feed Through (for cable Ø 5 - 6 mm)

- Water-proof Cable Feed-through for deck and wall mounting
- For cable Ø 5-6 mm (RG58 a.o.)
- Chrome plated solid brass



ELECTRICAL SPECIFICATIONS

MECHANICAL SPECIFICATIONS

Color	Chrome
Height	14.5 mm
Weight	20 g
Diameter	Ø 38 mm
Mounting place	On deck and wall (No mounting hardware supplied!)
Materials	Chromed solid brass and rubber

ORDERING INFORMATION

P/N	10000-481A (Individually packing in Polybag)
-----	--

PACKAGING INFORMATION

Type	Bulk packing or individually packing in Polybag or Carton box (See "ORDERING INFORMATION")
weight	Approx. 75 g

Datasheet

2 / 2

