

# 1" ADAPTER TUBE HD G1"-11 (58 MM)

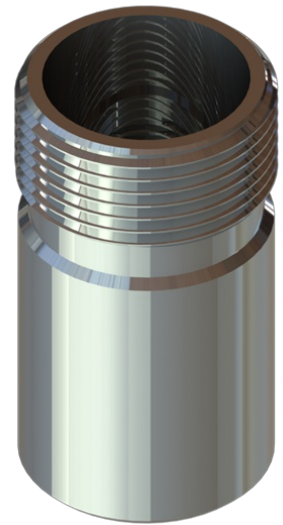
Adapter-tube 58 mm (G1"-11 to 1"-14NF threads)

- Adapter Tube for placing all Marine an Base Station Antennas with 1" Revolving Nut Mounting System (G1"-11) on any US-style 1"-14NF threaded brackets
- Chrome plated solid brass

## ELECTRICAL SPECIFICATIONS

## MECHANICAL SPECIFICATIONS

Color	Chrome
Length	58 mm
Weight	136 g
Diameter	Ø 32 mm
Mounting place	On 1"-14NF stud
Materials	Chrome plated solid brass



## ORDERING INFORMATION

10000-460	Bulk packing
10000-461	Individually packing in Polybag

## PACKAGING INFORMATION

Type	Bulk packing or individually packing in Polybag or Carton tube (See "ORDERING INFORMATION")
weight	Approx. 150 g



