

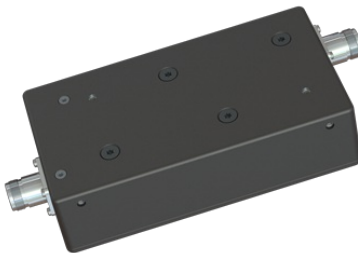
# IS-150 Series

VHF Isolators with harmonic filter

- Two versions covering the VHF band, 134 - 175 MHz
- Single and dual Isolators
- High Power handling, max. 100 W
- High Harmonic Rejection
- For inhouse use only

## ELECTRICAL SPECIFICATIONS

Type	VHF Isolator
Frequency	134 - 155 MHz, 155 - 175 MHz (L/H)
VSWR	≤ 1.5:1
Impedance	50 Ohm
Harmonic Attenuation	> 40 dB (up to 1.0 GHz)
Max. Input Power	100 W
Max. Reverse Power	20 W (When rack mounted)
Insertion Loss	IS-150-1-L/H: <1.0 dB IS-150-2-L/H: <1.2 dB
Isolation	IS-150-1-L/H: >22 dB IS-150-2-L/H: >44 dB



## MECHANICAL SPECIFICATIONS

Color	Black grey (RAL7021)
Weight	IS-150-1-L/H: 633 g IS-150-2-L/H: 1020 g
Connector	See 'ORDERING INFORMATION' (Type N-male option available upon request)
Dimension	IS-150-1-L/H: 149 x 82 x 40 mm IS-150-2-L/H: 192 x 82 x 40 mm
Mounting	Bottom or side, with M4 screws (see outline drawing)
Temperature	-20°C to +60°C
Serial no.	On product label

ORDERING INFORMATION

IS-150-1-L-NF-NF	134-155 MHz Single Isolator with harmonic filter Input: Type N-female, Output: Type N-female
IS-150-2-L-NF-NF	134-155 MHz Dual Isolator with harmonic filter Input: Type N-female, Output: Type N-female
IS-150-1-H-NF-NF	155-175 MHz Single Isolator with harmonic filter Input: Type N-female, Output: Type N-female
IS-150-2-H-NF-NF	155-175 MHz Dual Isolator with harmonic filter Input: Type N-female, Output: Type N-female

## Datasheet

3 / 3

