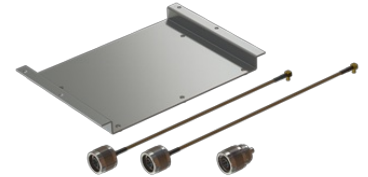


SLR 1000 Mounting Kit

Mounting kit for Motorola Repeater SLR1000

- Mounting kit for Motorola SLR1000 Repeater
- Mount MI-26 or MI-706 duplex filter inside the SLR1000
- Duplex filters not included - to be ordered separately
- Mounting plate and screws
- Jumper cables and adapter



MECHANICAL SPECIFICATIONS

Color	Silver
Dimensions	120 x 190 x 14 (Mounting Plate)
Weight	220 g
Materials	Aluminium, Stainless Steel, PVC, Copper, Brass
Connection	Cable 1: N(m) to MCX-RA(m) RG316D Cable (200 mm) Cable 2: N(m) to MCX-RA(m) RG316D Cable (280 mm) Adapter: N(m) to MCX(f)
Mounting hardware	4 PCS: M3 Torx 6 mm 5 PCS: M4 Torx 6 mm 5 PCS: M4 Split spring lock washer



ORDERING INFORMATION

10105-001	In Bag
-----------	--------

PACKAGING INFORMATION

Type	In Bag
Size	220 x 150 mm
Weight	230 g

