

BY900-XG

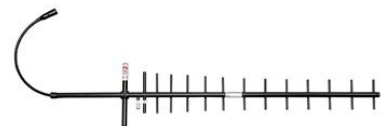
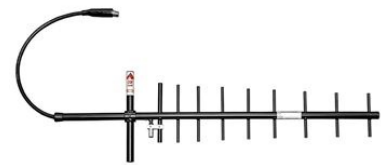
LTE 900 MHz Yagi Antenna Series

BY900-XG is a family of LTE 900 MHz Yagi Antennas

- Low Loss and Wideband Gamma match.
- Radiating elements, supporting booms and adjoining metal castings are constructed in high quality aluminum to prevent corrosion.

ELECTRICAL SPECIFICATIONS

Antenna Type	BY90-10G: 10-element Yagi Antenna BY90-12G: 14-element Yagi Antenna BY90-15G: 15-element Yagi Antenna
Frequency	870 - 960 MHz
Bandwidth	90 MHz
Impedance	50 Ohm
VSWR	<1.5:1
Polarisation	Linear (Vertical or Horizontal)
Gain	BY90-10G: 10 dBd, 12.15 dBi BY90-12G: 12 dBd, 14.15 dBi BY90-15G: 15 dBd, 17.15 dBi
Half-Power Beamwidth	BY90-10G: E-Plane: 42°, H-Plane: 48° BY90-12G: E-Plane: 32°, H-Plane: 34° BY90-15G: E-Plane: 26°, H-Plane: 28°
Front-To-Back Ratio	> 18 dB
Max. Input Power	150 Watt

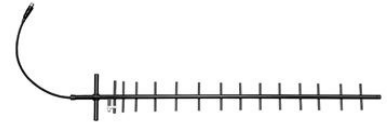


Datasheet

2 / 2

MECHANICAL SPECIFICATIONS

Color	Black Grey (RAL7021)
Dimensions	BY90-10G: 850 x 240 mm BY90-12G: 1250 x 240 mm BY90-15G: 1400 x 210 mm
Weight	BY90-10G: 1.5 kg BY90-12G: 1.8 kg BY90-15G: 2.3 kg
Mount Type	Fixed Tube Bracket in Galvanized Iron (included)
Mounting Place	On tube (Ø 20 - 50 mm, vertical or horizontal)
Survival Wind Speed	55 m/s
Materials	Aluminum 6063-T5, PP and Brass
Connector	Type N-female
Pigtail	Approx. 0.5 m RG213/U
Serial Number	On product label



ORDERING INFORMATION

BY90-10G	10 dBd, 12.15 dBi In Box
BY90-12G	12 dBd, 14.15 dBi In Box
BY90-15G	15 dBd, 17.15 dBi In Box