

BY800-XG

LTE 850 MHz Yagi Antenna Series

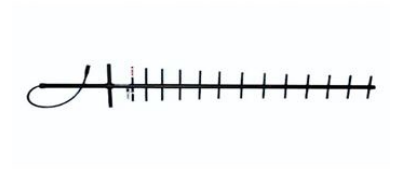
BY80-XG is a family of LTE 850 MHz Yagi Antennas

- Low Loss and Wideband Gamma match.
- Radiating elements, supporting booms and adjoining metal castings are constructed in high quality aluminum to prevent corrosion.



ELECTRICAL SPECIFICATIONS

Antenna Type	BY80-10G: 10-element Yagi Antenna BY80-12G: 14-element Yagi Antenna
Frequency	800 - 900 MHz
Bandwidth	100 MHz
Impedance	50 Ohm
VSWR	<1.5:1
Polarisation	Linear (Vertical or Horizontal)
Gain	BY80-10G: 10 dBd, 12.15 dBi BY80-12G: 12 dBd, 14.15 dBi
Half-Power Beamwidth	BY80-10G: E-Plane: 42°, H-Plane: 48° BY80-12G: E-Plane: 32°, H-Plane: 34°
Front-To-Back Ratio	> 18 dB
Max. Input Power	150 Watt



Datasheet

2 / 2

MECHANICAL SPECIFICATIONS

Color	Black Grey (RAL7021)
Dimensions	BY80-10G: 850 x 240 mm BY80-12G: 1250 x 240 mm
Weight	BY80-10G: 1.5 kg BY80-12G: 1.8 kg
Mount Type	Fixed Tube Bracket in Galvanized Iron (included)
Mounting Place	On tube (Ø 20 - 50 mm, vertical or horizontal)
Survival Wind Speed	55 m/s
Materials	Aluminum 6063-T5, PP and Brass
Connector	Type N-female
Pigtail	Approx. 0.5 m RG213/U
Serial Number	On product label

ORDERING INFORMATION

BY80-10G	10 dBd, 12.15 dBi In Box
BY80-12G	12 dBd, 14.15 dBi In Box