

Datasheet

HCMR450-2

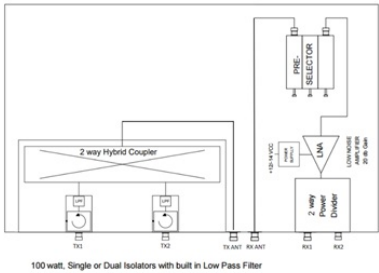
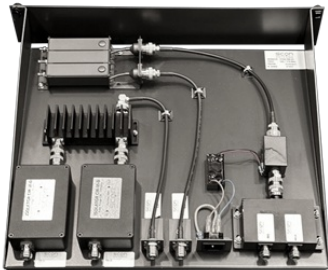
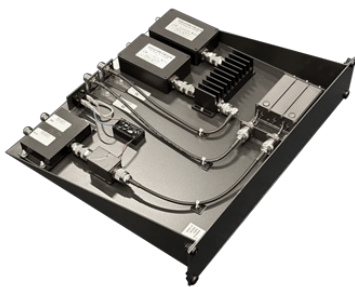
2CH UHF 400-475 MHz Hybrid Combiner

HCMR450-2 series is a combined UHF TX/RX hybrid combiner with single or dual isolators used with two antennas, one RX and one TX or to be used with external duplex filter.

- Standard EIA 19" tray, (2HU).
- Tuned to customer specified frequencies.
- Built-in low pass filter.
- Max power 100W as standard.

ELECTRICAL SPECIFICATIONS

| | |
|---------------------|---|
| Type | UHF TX/RX Hybrid Combiner - 2 Channels |
| Frequency | T: 380 - 420 MHz L: 400- 440 MHz H: 440 - 475 MHz |
| VSWR | ≤ 1.5:1 |
| Impedance | 50 Ohm |
| Max. Input Power | 100 Watts (per channel) |
| Insertion Loss (TX) | Single isolator: < 4.1 dB Dual isolator: < 4.4 dB |
| Isolation TX - TX | Single isolator: > 50 dB Dual isolator: > 70 dB |
| Isolation RX-RX | >20 dB |
| Bandwidth (RX) | Approx. 5 MHz (Adjustable in band) |
| Gain | RX: 20±1.0 dB |
| LNA Noise Figure | < 2.0 dB |
| Power Supply | 100-240 V; 50/60 Hz (Max. 7W) |



Datasheet

MECHANICAL SPECIFICATIONS

| | |
|-----------------------|--|
| Color | Black gray (RAL7021) |
| Dimension | 482.6 x 89 x 400 mm (W x H x L) |
| Weight | HCMR450-2S: 4.2 kg HCMR450-2D: 4.6 kg |
| Connector | Type N-female |
| Serial no. | On product label |
| Operating temperature | -20° to +60°C |

ORDERING INFORMATION

| | |
|------------|--|
| 55420-003T | HCMR450-2ST 380-420 MHZ 2CH x 100 W Single Isolator |
| 55420-103T | HCMR450-2DT 380-420 MHZ 2CH x 100 W Dual Isolator |
| 55420-003L | HCMR450-2SL 400-440 MHZ 2CH x 100 W Single Isolator |
| 55420-103H | HCMR450-2DL 400-440 MHZ 2CH x 100 W Dual Isolator |
| 55420-003H | HCMR450-2SH 440-475 MHZ 2CH x 100 W Single Isolator |
| 55420-103H | HCMR450-2DH 440-475 MHZ 2CH x 100 W Dual Isolator |
| Note | Power cable is not included |