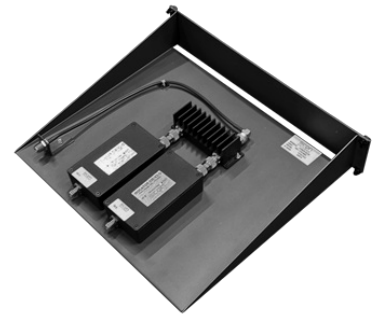


HC450-2 UHF TX Combiner

Hybrid 2 channel UHF TX Combiner

HC450-2 series is a UHF TX hybrid combiner with single or dual isolators used for combining 2 UHF transmitters into one antenna with close frequency spacing.

- Standard EIA 19" tray, 400 mm depth (2HU).
- Built-in low pass filter.
- No tuning required (full bandwidth)

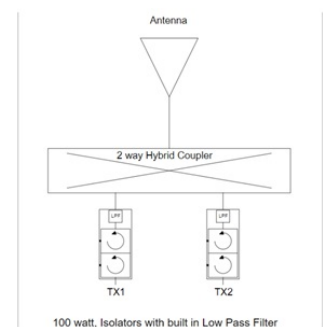


ELECTRICAL SPECIFICATIONS

Type	UHF Hybrid Combiner - 2 Channels
Frequency	400 - 475 MHz
VSWR	≤ 1.5:1
Impedance	50 Ohm
Max. Input Power	100 Watts (Per channel)
Insertion Loss	Single Isolator: < 4.0 dB Dual Isolator: < 4.5 dB
Isolation TX - TX	Single Isolator: > 50 dB Dual Isolator: > 70 dB

MECHANICAL SPECIFICATIONS

Color	Black Grey (RAL7021)
Dimension	482.6 x 89.0 x 400 mm (W x H x L)
Weight	HC450-2S: 3.1 kg HC450-2D: 3.5 kg
Connector	Type N-female
Serial no.	On product label
Operating temperature	-20° to +60°C



ORDERING INFORMATION

55427-003	HC450-2S 400-475 MHZ 2CH x 100 W Single Isolator 2HU
55427-103	HC450-2D 400-475 MHZ 2CH x 100 W Dual Isolator 2HU