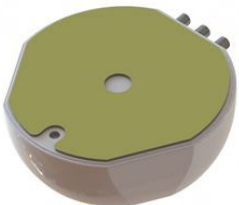


# Thuraya Passive Omnidirectional Mobile SATCOM Antenna (+GSM/3G)

Low-profile magnetic or adhesive tape mounted antenna for Fleet-Management use

The SCAN Antenna 60410 is a passive antenna for Thuraya Docking stations. It is compatible with SO, SG and XT handsets, the SM-2500 module and more. It requires no pointing towards satellite and the rugged design ensures a reliable performance in harsh conditions. The radome has a smooth surface and low loss properties.

- Built-in filtered active GPS antenna
- Multiband SAT/GPS/GSM/3G antenna design
- Made for magnetic mounting on vehicle roof (steel) and adhesive tape mounting on any surface



## ELECTRICAL SPECIFICATIONS

Frequency	1525 - 1660.5 MHz, 824 - 960 MHz, 1710 - 2170 MHz
Impedance	50 ohm
Satellite System	Thuraya, GPS
Polarisation	LHCP (SAT)
Axial ratio	< 6 dB
Gain	4 dBic
LNA Gain	25 dB (GPS)
Noise Figure	1.2 dB (GPS)
Supply voltage	3.0 - 5.5 V DC (GPS)
Current consumption, average	20 mA (GPS)

Datasheet

MECHANICAL SPECIFICATIONS

Color	White
Weight	170 g
Diameter	Ø 111 mm
Mounting	Magnetic or with supplied adhesive tape
Mounting Place	On steel roof etc.
Mounting Instruction	Included
Height above roof	36.5 mm
Materials	ASA, PCB, brass and PTFE
Operating Temperature	-40°C to +70°C
Connector	SAT: SMA-female (Black coding)
Connector2	GSM: SMA-female (Red coding)
Connector3	GPS: SMA-female (Blue coding)
Cable	No cables supplied
Ingress protection	IP66

ORDERING INFORMATION

60410-001	Antenna only - no cables supplied
-----------	-----------------------------------

PACKAGING INFORMATION

Type	Hardbox
size	184 x 184 x 74 mm
weight	Approx. 220 g

## Datasheet

3 / 3

