

BY70-Dual/TETRA

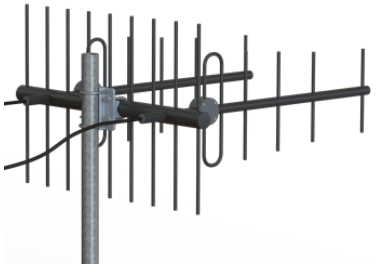
UHF 400 MHz Five element Dual Yagi Antenna

BY70-Dual/TETRA is a 5-element Yagi array for indoor coverage UHF systems, ideal as donor antenna for indoor UHF systems

- Wideband Balun unit made of Polypropylene (PP).
- Radiating elements, supporting booms and adjoining metal castings are constructed in high quality aluminum to prevent corrosion.
- Narrow beam pattern, Very low sidelobes and high Front-To-Back ratio

ELECTRICAL SPECIFICATIONS

Antenna Type	Dual 5-element Yagi Antenna
Frequency	380 - 410 MHz
Bandwidth	30 MHz
Impedance	50 Ohm
VSWR	<1.5:1
Polarisation	Linear
Gain	11.0 dBd, 13.15 dBi
Half-Power Beamwidth	H-Plane: 38° E-Plane: 50°
Front-To-Back Ratio	> 20 dB
First Sidelobe Level	< -20 dB
Max. Input Power	150 W
Antistatic Protection	Direct Ground



MECHANICAL SPECIFICATIONS

Color	Black Grey (RAL7021)
Dimensions	950 x 800 x 510 mm
Weight	Approx. 5.3 kg (not including mount)
Mount Type	Fixed Tube Bracket in Aluminium (included - approx. 1.0 kg)
Mounting Place	On tube (Ø 32- 65 mm, vertical or horisontal)
Wind Load	168 N @ 45 m/s (160 km/h)
Materials	Aluminum 6063-T5, PP and Brass
Operating Temperature	-40°C to +65°C
Connector	Type N-female
Pigtail	Approx. 0.55 m RG213/U Approx. 0.35 m Impedance Transformer
Serial Number	On product label

ORDERING INFORMATION

BY70-Dual/TETRA	In Box
-----------------	--------

Datasheet

3 / 3

